

Duwamish Valley Youth Corps Stormwater Education & Outreach

2022 Duwamish River Opportunity Fund Grant



Collaborators



**Seattle
Public
Utilities**



Presenter (and Project Manager)
Michelle Gaither, *PPRC*

Contributors

Carmen Martinez, DVYC

Ruby and Melissa, DVYC

Harper (Susan Harper), SPU

Ry Yahn, SPU

Angel Contreras-Cruz, PPRC

Pierre Labarge, SPU

David Shin, SPU

Kennidy Stood, Cascadia Consulting Group

Keiko Betcher, Cascadia Consulting Group

Jill Tepe, University of Washington

Robert Hanlon, Utility Squared



Special Acknowledgements



CONTINUING EDUCATION PROGRAMS

DEPARTMENT OF ENVIRONMENTAL & OCCUPATIONAL HEALTH SCIENCES

School of Public Health



2022 Project Timeline



Cohort 1 (Stencil Design)

February

- Studied stormwater impacts & infrastructure
- Graphic & stenciling design workshop

March

- Practiced stenciling
- Learned outreach tactics
- Field trips to South Operations Center, storm drains, & South Pump Station
- Distributed community survey on stencil designs

April

- Recorded how-to video & promotional video

Cohort 2 (Food Truck Outreach)

May

- Presentation from SPU stormwater outreach
- Presentation from UW CleanSHiFT
- Designed stickers decals

June/July

- Field trip to commissary kitchen
- Visited food trucks

Summer Groups

July - August

- Visited additional food trucks
- Designed postcard mailer for South Park businesses and residents
- Stenciled 49 storm drains



Phase 1: Designing & Applying Stencils

Topics covered during classroom sessions and field excursions with DVYC interns:

- **Stormwater pollution and impacts**, especially relating to the Duwamish
- Lectures on **infrastructure**, including **energy** and **wastewater treatment**
- Introduction to **mapping**, including how Seattle tracks and identifies sanitary & storm sewer lines, and inlets, storm drains, and catch basins
- Presentation from Cascadia Consulting on **graphic design principles**, including interactive workshop on stenciling design
- Discussions of **potential career opportunities** in each topic area field



Field Trips
South Operations Center & South Pump Station



Seattle
Public
Utilities





Designing, Applying, & Sharing Stencils





First Stencil Design



Finalized Stencil Design



If you want your storm drain stenciled
in the Duwamish: Contact us!

See Marketing Video on Youtube →



[Promotional Video ([Link](#))]



Seattle
Public
Utilities





HOW TO PAINT A STORM DRAIN STENCIL

To Keep our Waterways Clean



[[Link to Video](#)]



Seattle
Public
Utilities



Postcards for South Park Businesses and Residents



Did you know that water entering most storm drains in the Duwamish Valley flows untreated into the Duwamish River? And did you know that this stormwater is one of the biggest sources of pollution in the Duwamish River?

Stormwater travels over land, picking up pollutants along the way, like motor oil, yard chemicals, pet waste, and garbage. Polluted stormwater then flows into storm drains and local waterbodies like the Duwamish, where it can harm people and the environment.

The Duwamish Valley Youth Corps is stenciling storm drains in your neighborhood as a reminder that what goes into the drain will end up in the Duwamish River. Look out for our new stencil design, which reflects the important wildlife in and around the Duwamish River.

Do your part to ensure that no litter or liquid (aside from rainwater) goes into the storm drain. Consider providing year-round stewardship by Adopting a Storm Drain in your neighborhood!

If you have questions or would like to stencil a storm drain, please email PreventPollution@Seattle.gov or call (206) 308-4674.

¿Sabía usted que en el valle de Duwamish, el agua que ingresa a la mayoría de los desagües pluviales fluye sin tratamiento y va al río Duwamish? De hecho, las aguas pluviales son continuamente la mayor fuente de contaminación en el Duwamish.

Cuando la lluvia cae al suelo, recoge contaminantes como aceite de carro, fertilizantes, pesticidas, desechos de mascotas y basura. Esta agua contaminada fluye posteriormente hacia los desagües pluviales, que canalizan esa agua hacia los arroyos, lagos y ríos locales, como el Duwamish, donde puede dañar a las personas y al medio ambiente.

El grupo Duwamish Valley Youth Corps está colocando plantillas en los desagües pluviales de su vecindario como un recordatorio de que lo que entre en el desagüe terminará en el río Duwamish. Busque nuestro nuevo diseño de plantilla, que refleja la importancia de la vida silvestre en el río Duwamish.

Por favor, ayude a cuidar nuestro río evitando que la basura, las hojas, el jabón, los fertilizantes y otros productos químicos entren en los desagües pluviales. Ofrezcase como voluntaria o voluntario para estar a cargo de un drenaje pluvial cerca de usted y reciba un juego de herramientas gratuito inscribiéndose en el programa Adopt-A-Drain (Adopta un Drenaje).

Si tiene preguntas o desea colocar una plantilla de un desagüe pluvial, envíe un correo electrónico a PreventPollution@seattle.gov / carmen@drcc.org o llame al 206-308-4673.

Bạn có biết rằng nước đi vào hầu hết các cống thoát nước mưa ở Thung lũng Duwamish chảy vào sông Duwamish không được xử lý? Và bạn có biết rằng nước mưa này là một trong những nguồn ô nhiễm lớn nhất ở sông Duwamish?

Nước mưa đi qua đất liền, cuốn theo các chất ô nhiễm trên đường đi, như dầu máy, hóa chất sân vườn, chất thải vật nuôi và rác thải. Nước mưa ô nhiễm sau đó chảy vào cống thoát nước mưa và các vùng nước địa phương như Duwamish, nơi nó có thể gây hại cho con người và môi trường.

Quân đoàn Thanh niên Thung lũng Duwamish đang nâng cao nhận thức trong khu vực lân cận của bạn bằng cách tráng các cống thoát nước mưa như một lời nhắc nhở rằng những gì đi vào cống sẽ cuối cùng ở sông Duwamish. Hãy chú ý đến thiết kế stencil mới của chúng tôi, phản ánh động vật hoang dã quan trọng trong và xung quanh Sông Duwamish.

Làm phần việc của bạn để đảm bảo rằng không có rác hoặc chất lỏng (ngoài nước mưa) đi vào cống thoát nước mưa. Cân nhắc cung cấp dịch vụ quản lý quanh năm bằng cách Thông qua Cống thoát nước Bảo trong khu phố của bạn!

Nếu bạn có thắc mắc hoặc muốn khắc phục sự cố thoát nước mưa, vui lòng gửi email tới PreventPollution@Seattle.gov.



A Few Learnings Along the Way

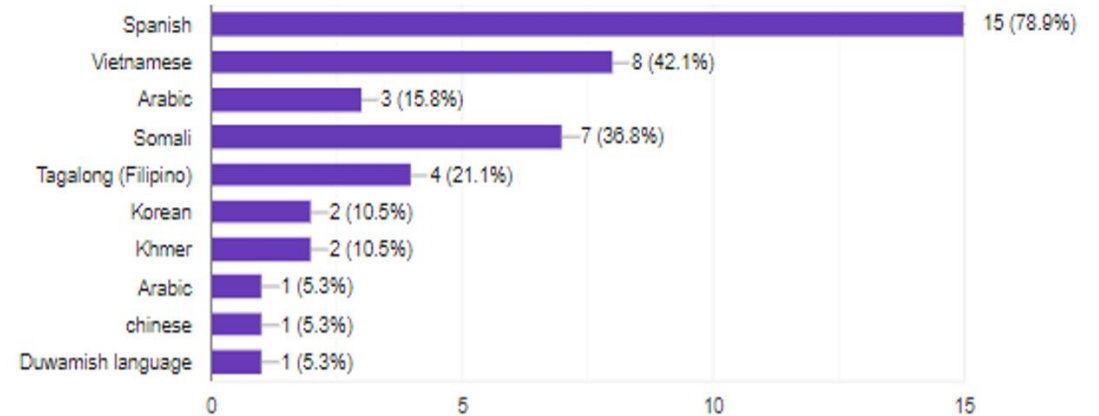


Lesson: Flimsy material, and not enough "support" within the design

Lesson: Need the correct wildlife for Duwamish, even Though seals and starfish look great!



Survey Response on Desired Languages for Stencils in South Part



A Survey Responder:

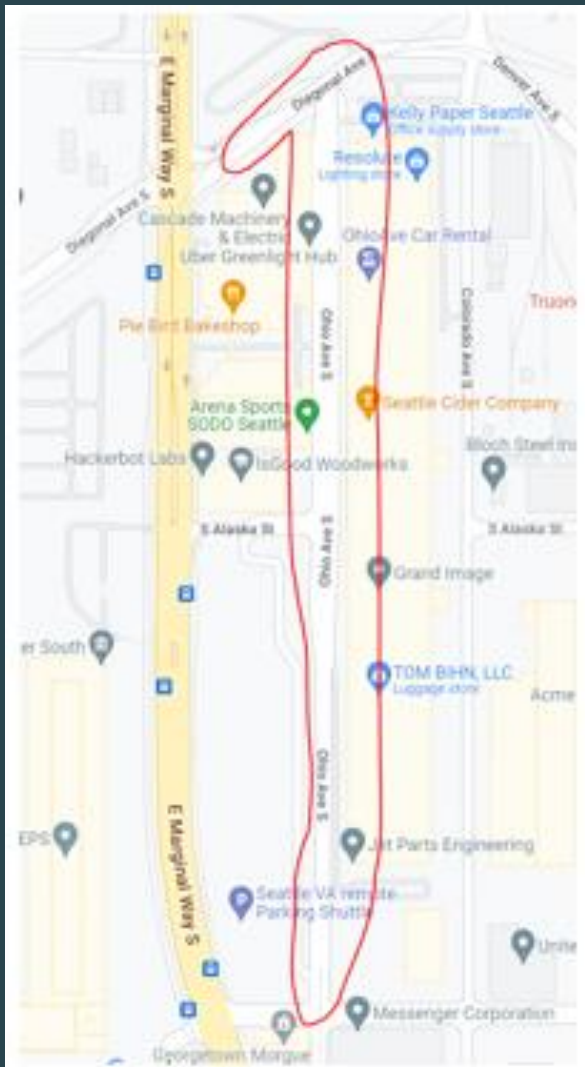
“Here’s the thing: the storm drains in my neighborhood (Georgetown) go to water treatment. You can look this info up on the city storm drain map to verify. It’s true of most industrial neighborhoods. We DON’T drain straight into the River”.

Learning: Need to prioritize stenciling along sewer lines that flow directly to the Duwamish, but also let people know that many lines can also flow to the river during storm events

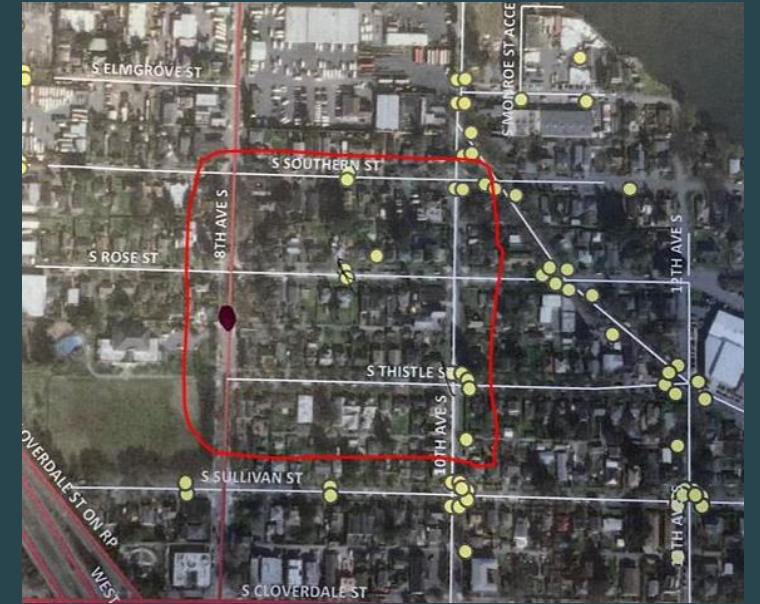


Seattle
Public
Utilities





Georgetown Stenciling Area



One South Park Stenciling Area

Finalized Stencil Design



Phase 2: Food Truck Outreach

Classroom sessions and field excursions with DVYC interns:

- Stormwater pollution and impacts, especially relating to the Duwamish
- Introduction to fats, oils, and grease (FOG), and wastewater generation typical of food trucks
- Lessons on graphic design principles
- Presentation and outreach material examples from UW CleanSHiFT



- Lessons on best practices from EnviroStars and Green Seattle relating to food service and example outreach materials and SWAG
- Discussions of potential career opportunities in each topic area field



Field Trips
Commissary Kitchen



Ewww!



Field Trips
Commissary Kitchen – Grease Trap



Seattle
Public
Utilities



Dump at the
commissary
kitchen



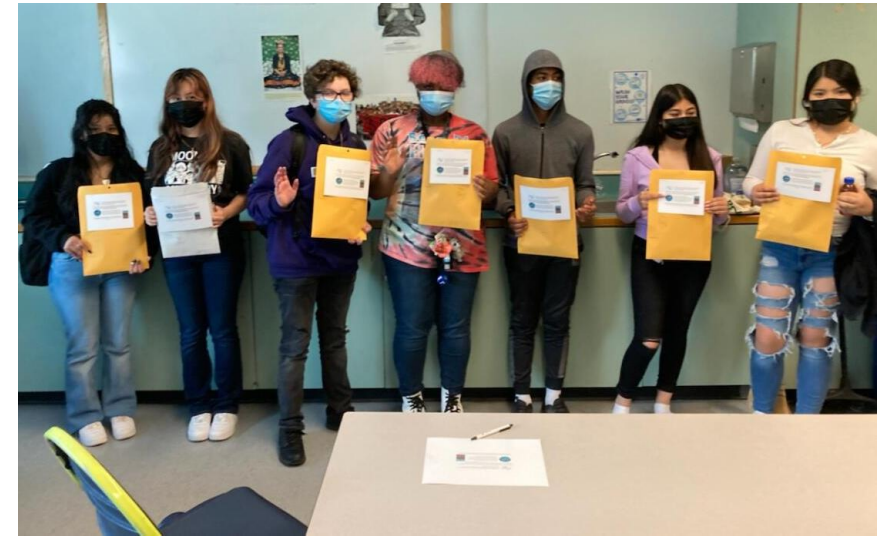
NOT THE DRAIN!



Decals & Stickers for Food Trucks



Preparing for Food Trucks



Visited 12 Food Trucks



Questions?



**Seattle
Public
Utilities**

